



*Margaret Evans*

*Artist, Author, Tutor*

**2014 Programme**

**Including Art Workshops and  
International Paintaways**

*Margaret Evans*



*Venetian Pinks*

*Evening Grazing*



*Autumn Golds*

*Front Cover: Venetian Turquoise*

# Welcome to the 2014 programme

Dear Painting friends...

We enter our 26th year with lots of exciting changes & new ideas to tempt & inspire your artistic development. Our location is new, our titles are new, and we will be bringing some special international artists to Scotland over the next few years, starting this year with Tony Allain, a brilliant pastel master from New Zealand.

Workshops with Margaret's demos & tuition now include a light lunch, as well as teas/coffees, and will be held at Duchally Hotel, providing a lovely setting. .... see advert on back page. Book 2 or more workshops for 10% discount (must be booked together in advance). There are only 7 workshops this year, so book early. See our other services too & don't forget our Paintaways to great locations. Keep in touch!

Happy Painting!

Margaret

## Shinafoot Services

### Private Tuition...

If you need a little more individual help with your painting or an introduction before taking a workshop, then Margaret's one-to-one tuition is for you! A two-hour session will provide private instruction in your particular medium/subject and a critique of your recent work. This is an ideal place to start if you are new to painting, or just lack confidence.

**Price for 2 hour session: £110**

### Critique Service...

Single painting critique...either send a photograph of your painting and receive a detailed written critique, or email the image as a jpeg and have your critique mailed back to you with encouraging hints on your style and handling of the medium/subject.

**Price: £25**

Collection of paintings critique... send **up to** 10 images in the same way as mentioned above and Margaret will critique the collection and give an overview of how to improve and develop future work. Work should be dated to establish what progress has been made to date. Critique is for a body of work and not individual pieces.

**Price: £65**

### Bespoke picture framing...

We offer a bespoke picture framing service and cater for both modern and traditional styles.

We can frame paintings, memorabilia, certificates, photographs, sport shirts and just about anything you can imagine!

### Art Trip Management Service...

Our Art Trip Management Service offers tutors and their students the benefit of our experience organising painting holidays both in the UK and abroad. We cover areas in France, Croatia, Scotland and Italy, with particular favourites like Tuscany and Venice. Our special all-inclusive packages for overseas tutors gives a chance to bring a group to Scotland, show how beautiful it is, and allows tutors to concentrate on the teaching aspect of a trip, safe in the knowledge that the details have been taken care of. Art groups can also benefit from this service with a free place for an organiser, allowing members to paint on holiday with their friends.

*We now also accept payments by credit card and through PAYPAL (5% charge for PAYPAL transactions)*



Duchally Hotel is our new workshop venue for 2014 with ample studio space, set in a beautiful rural location near Auchterarder. *Directions on page 6.*

**INCLUDES tea, coffees and lunches.**

- |                     |   |             |
|---------------------|---|-------------|
| <b>18 - 19 JAN</b>  | <b>DEVELOP CREATIVE PAINTINGS FROM PHOTOS</b>   | <b>£190</b> |
|                     | For beginners or experienced, the convenience of painting from photos is often spoiled by the lack of imagination & flair when developing a painting. Learn how to be inspired, creative, inventive & imaginative with your photos, develop sketches to create options in composition & design, and get extra mileage out of your run-of-the-mill photos. Any medium, draw or paint.  |             |
| <b>15 - 16 FEB</b>  | <b>EXPLORING DIFFERENT MEDIA FOR STILL LIFE</b>   | <b>£190</b> |
|                     | For beginners or experienced, the traditional still-life is an important subject in helping to develop your sense of perception, compositional skills, artistic flair & concentration. Study subject themes that make still life more personal to you. Sharpen perspective & drawing skills, create colour themes and modernise this classical subject in any medium or combination.  |             |
| <b>8 - 9 MARCH</b>  | <b>MOOD &amp; ATMOSPHERE v SUNSHINE AND SHADOWS</b>   | <b>£190</b> |
|                     | At any level, learn to control the weather by creating different moods to your landscapes. Work from your photos over two days to create mists & moods on day 1, and sunshine & shadows on day 2. Improve on the weather, and be creative with the scenes in front of you when painting outdoors. Bring sketches also to develop their tonal depth, and learn about greyscale and colour variations for mood.   |             |
| <b>5 - 7 MAY</b>    | <b>TONY ALLAIN – PASTELS WITH GRUNT! 3 DAY</b>  | <b>£330</b> |
|                     | We look forward to welcoming New Zealand pastel master Tony Allain as guest tutor for this three day workshop of pure pastel indulgence! The subjects he chooses are varied, ranging from marine and landscapes, town and street scenes through to still life.  |             |
| <b>22 - 23 MAY</b>  | <b>PASTELS UNLEASHED</b>  | <b>£190</b> |
|                     | New to pastels, or stuck in a rut with them? They are capable of SO much more than the dry, dusty impression people have of them. In reality pastels are vibrant, versatile and made of pure pigment. Discover wet techniques to create watercolour-type washes, painterly brush-strokes, delicate tints or strong eye-catching colour. Papers, supports & types of pastels discussed. Why not buy Margaret's new book "Pastels Unleashed" ... signed personally! |             |
| <b>2 - 3 AUGUST</b> | <b>SIMPLIFYING OUTDOOR PAINTING</b>   | <b>£190</b> |
|                     | Never painted outdoors? Terrified, or just not good at simplifying the kit? Learn about the differences painting 'the real thing' including how to choose and simplify the scene, and how to cope with changing light and moving shadows. Whether you are just sketching and water colouring, or going for the "full monty" with oils, canvas, the lot, this is for you! Paint around the Duchally resort, with studio sessions.                                  |             |
| <b>1 - 2 NOV</b>    | <b>LOOSE &amp; FLOWING FIGURE PAINTING &amp; PORTRAITS</b>  | <b>£190</b> |
|                     | For beginners or experienced, study the form & shapes to create loose figure painting without detail, whether for adding to landscapes, or figurative compositions. Study portraiture, and the basic steps to understanding proportions of the face. Learn to capture a likeness or even have a go at animals. Bring any medium, and work from both your own photos of figures, and a sitter on day 2 for portraiture.  |             |
| <b>29 - 30 NOV</b>  | <b>PAINTING SENSATIONAL SKIES</b>   | <b>£190</b> |
|                     | Beginners welcome & any level. A good sky can cover three quarters of a simple landscape & look stunning, set the mood, the season and the drama. Learn to create beautiful skies, and study some real November ones if possible from short outdoor sketches, photographs and/or imagination. Work in any medium, and develop a painterly approach, to create movement & atmospheric masterpieces.  |             |



# International Painting Diary 2014

- 27 - 30 MARCH KINTAIL PAINTAWAY** £595  
A 3 night / 4 day trip based in Kintail is the ideal preliminary to the Paint Scotland week. (*see below*) Staying at our favourite location, Kintail Lodge Hotel on the shore of Loch Duich, this sketchbook holiday will include stunning scenery of the West Coast and the Isle of Skye for gathering wonderful painting material. Includes 3 nights dinner, bed & breakfast, transport by minibus from and back to Auchterarder, tuition by Margaret, management by Malcolm, and full range of unpredictable Scottish weather to guarantee exciting painting challenges!
- 30 MARCH - 6 APRIL PAINT SCOTLAND WEEK** £1200  
Based at the Duchally Country Estate near Gleneagles and Auchterarder, this week long workshop incorporates day trips to Glencoe and Stirling Castle as well as providing studio days to work from sketches and photos. The studio space will also be available in the evenings so the very keen among you can paint on as long as you like! Includes demos and tuition from Margaret, 7 nights dinner, bed & breakfast, accommodation in luxury cottages, transport to all painting locations including the day trips and use of studio.  
*Book both above trips and save £145!*
- 12 - 19 MAY VENICE FOR ARTISTS** £1395  
A week's painting in and around Venice, led by Margaret, who knows the quiet areas and best painting locations from 20+ years experience. No tuition, but paint along with like-minded artists and enjoy the challenges together of painting one of the most beautiful cities in the world. Includes trips to Murano and Burano - for artists of all medium/ability.
- 13 - 20 JULY PAINT FRANCE WEEK** £1395  
We return to the beautiful La Guirade residence set between Toulouse & Carcassonne for a week of glorious French countryside, fine food and wines. This luxury accommodation offers spectacular views and is close to the tranquil Canal du Midi, offering a variety of painting subjects including canals, boats, villages, markets & panoramic vistas. Includes 7 nights full board, day trips with transport, transfers from Toulouse airport, accompanying host/guide, tuition & sunshine!
- 4 - 11 OCT PAINT CROATIA (& 3 countries)** £1395  
An ideal trip for discovering the unspoilt beauty of Croatia and its neighbouring countries, so even if you've been painting with us before this itinerary offers entirely new challenges for artists. We will be based in the small picturesque fishing village of Mlini only 11km from Dubrovnik.  
Trip includes 7 nights half-board accommodation, 1 evening concert in Dubrovnik, transfers from Dubrovnik airport, 1 special country house lunch with wine, English speaking tour guide and daily tuition.  
NO single room supplement.
- 13 - 20 OCT TUSCANY FOR ARTISTS** £1395  
Our trip to Tuscany this year is later to enjoy the groves of ripening olives and the glow of the hilltop villages in autumn. This Paintaway can be added on to our Croatia week for those wishing a longer holiday. Our favourite location for stunning paintable scenery.
- 28 - 31 OCT GLENCOE PAINTOUT FOR ARTISTS!** £495  
A three night mini break especially for artists who enjoy the challenges of painting plein-air. Lots of fun, dramatic scenery and unpredictable weather thrown in for good measure! Basic accommodation in the heart of Glencoe, and car-pooling from Auchterarder for added flexibility and those without transport.

## Golf Art Gallery...

...offers a new concept in purchasing art.

As well as original paintings & prints on display in our gallery, we offer a personalised commission service to tailor your particular requirements.



- Corporate gifts & presentations
- Particular golf courses / holes of your choice
- Sizes to suit your budget / requirements
- Selection of medium i.e. oils, pastels, watercolours, pen & wash, pencil
- Figurative & Portrait commissions
- Bespoke in-house picture framing
- Shipping of artwork arranged internationally



### Opening Hours by Appointment Only

All enquires to Malcolm Tel - 01764 663639 Mobile - 07927 197604

## Allandale House

*Bed and Breakfast*

7 EN-SUITE DOUBLE / TWIN ROOMS  
2 FAMILY ROOMS

17 HIGH STREET, AUCHTERARDER  
TEL: 01764 663329

[www.allandalehouse.com](http://www.allandalehouse.com)

## Trip Management Service

**Specialists in organising trips  
for tutors and their own groups  
throughout Western Europe  
and Scotland.**

*Contact Margaret using the details  
at the bottom of this page.*

## How to find us ...

Auchterarder is just off the A9, approximately 50 miles north of Edinburgh and Glasgow,  
15 miles north of Stirling and 15 miles south of Perth.

Duchally Hotel and Country Estate can be accessed from the A9 northbound by taking the A823 Gleneagles turn-off before Auchterarder. At the junction, turn right and go straight over the mini roundabout.

\*Continue for a mile - the Duchally turning is on the left and is well signposted.  
The estate itself is a further mile along this unclassified road.

Travelling southbound, take the turning for A823 Glendevon and Gleneagles  
approximately half a mile past Gleaneagles Station. Other directions as above\*

**Contact Margaret at:**

[www.shinafoot.co.uk](http://www.shinafoot.co.uk)

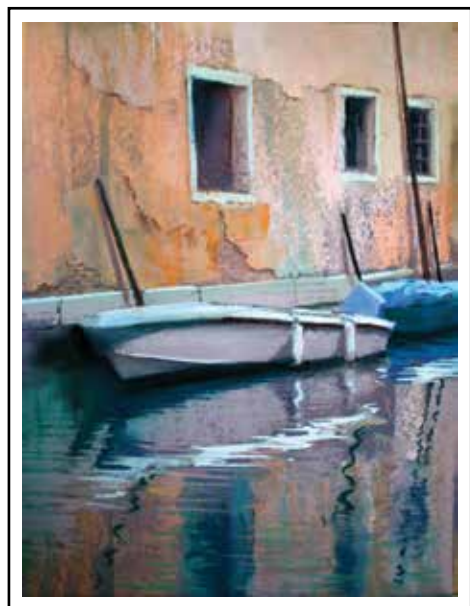
Tel: 01764 663639

[enquiries@shinafoot.co.uk](mailto:enquiries@shinafoot.co.uk)





*Iona Beach 2*



*Il Contrasto*



*Il Riflesso*



# An elegant getaway with all the comforts of home.

- 4 star Country House Hotel
- Luxurious Lodges
- Award-winning Restaurant
- Whisky Bar
- Games Room
- Wedding Packages
- Conference Room
- Indulgent Spa and Leisure Centre
- Outdoor Pursuits



**Duchally Country Estate**, Gleneagles,  
Auchterarder, Perthshire PH3 1PN  
Tel: 01764 663071 · Email: [info@duchally.co.uk](mailto:info@duchally.co.uk)  
[www.duchally.co.uk](http://www.duchally.co.uk)

  
**DUCHALLY**  
COUNTRY ESTATE  
A CLC WORLD RESORT